



Better than Budgeting

Upgrade to version 2.7

Version 2.7 is a separate installation. If you used a previous version you will have to take some easy steps to migrate your data. Your previous version is still installed after you installed version 2.7.

The next pages show you step by step how to proceed.

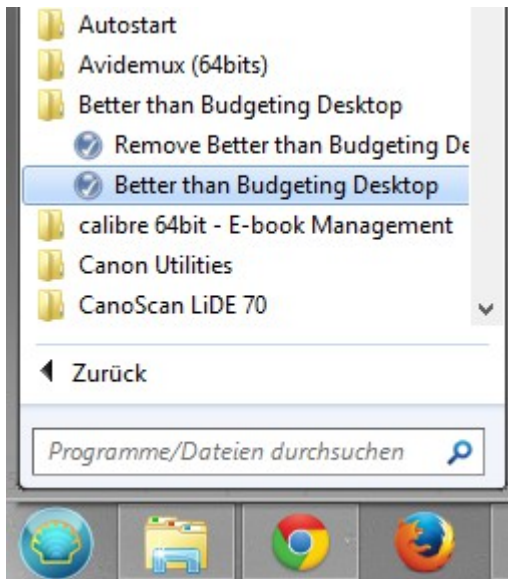


Better than Budgeting

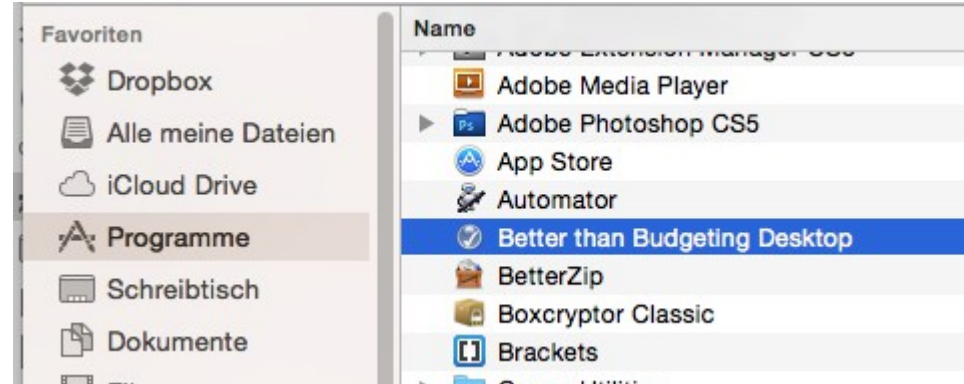
Upgrade to version 2.7

Step 1: Start the previous version of the app

Windows:



Mac OS:



Remark: The screenshots were taken on a windows computer. The steps are exactly the same on Mac OS.



Better than Budgeting

Upgrade to version 2.7

Step 2: Open the Tools page and click „Backup“ and select a folder where to store the file.

The screenshot shows the 'Better than Budgeting' application interface. The 'Tools' page is active, displaying several options: 'Data Export' (Overview-Export, Detail-Export), 'Backup' (highlighted with a red box), 'Recover data', 'Delta Import', 'Categories' (Export Categories, Import Categories), and a 'Reset categories' button. A blue arrow points from the 'Backup' button to a 'Ordner suchen' (Find Folder) dialog box. The dialog shows a list of directories, with 'Volume (N:)' selected. A second blue arrow points from the dialog to a 'Backup done' notification box. The notification box displays the message 'Exported file within folder N:\:' and lists the file 'BtB_17072015_182107.btb'. An 'Ok' button is at the bottom of the notification.

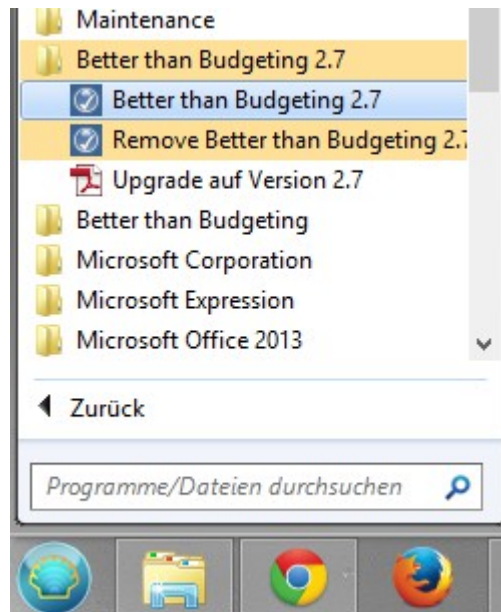


Better than Budgeting

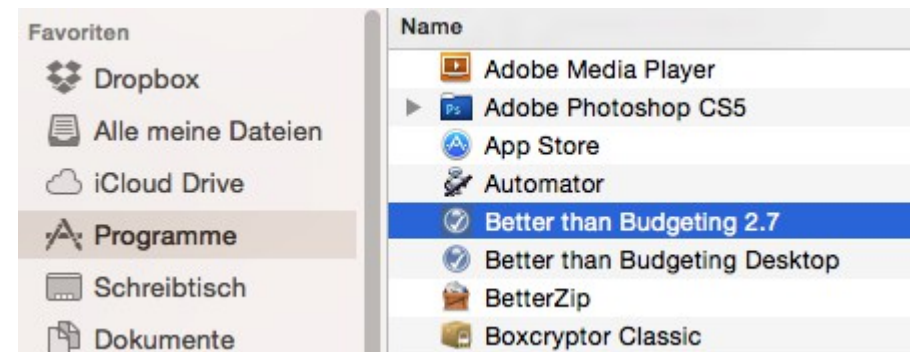
Upgrade to version 2.7

Step 3: Open Version 2.7

Windows:



Mac OS:

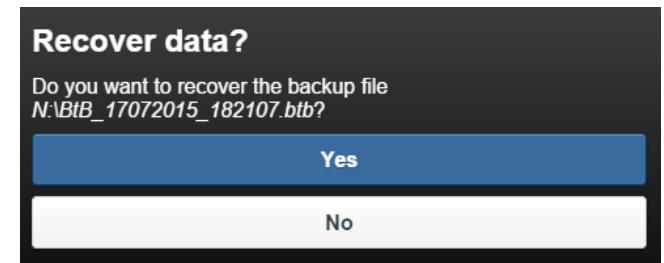
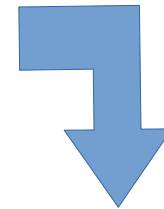




Better than Budgeting

Upgrade to version 2.7

Step 4: Go to the Tools page and click „Recover data“. Select the file exported in step 2 and confirm the dialog.





Better than Budgeting

Upgrade to version 2.7

Congratulations! You have successfully migrated your data to version 2.7. You might uninstall the previous version.

The screenshot displays the 'Better than Budgeting' application window. At the top, there's a navigation bar with a hamburger menu icon on the left and the application name 'Better Than Budgeting' in the center. Below this is a secondary bar with a '+ Add Category' button and a 'Transaction List' button. The main content area shows a 'Global balance' section with two values: '\$3,601.00' and '\$3,700.00'. Below that, a 'Display' section indicates 'Primary Sum = Current month' and 'Reference sum = Previous month'. The main budget table is divided into 'Expenses' and 'Income' sections. The 'Expenses' section includes 'Food' (\$100.00) and 'Leisure' (\$99.00). The 'Income' section includes 'Salary' (\$3,800.00). Each category row has a plus sign and an edit icon. At the bottom, there's a dark navigation bar with icons for 'Home', 'Repetitions', 'Tools', 'Settings', and 'Charts'.

Category	Current Month	Previous Month
Expenses	\$199.00	\$100.00
Food	\$100.00	\$100.00
Leisure	\$99.00	\$0.00
Income	\$3,800.00	\$3,800.00
Salary	\$3,800.00	\$3,800.00